

Superstructure: Steel Pratt truss continuous over piers with cast-iron sidewalks on both sides. In fair condition. It has just been repaired with 3" transverse planking and asphalt paving.

Substructure: Consists of field stone and split granite laid up dry in very poor condition.

Stream: Rapid below dam. Ordinary high water reported locally at Elev. 74.8. Extreme high water reported at Bridge seat, Elev. 82.51, year of 1896.

Foundation: No penetration due to the rocky condition of the stream bed. The dam is reported to have a ledge foundation.

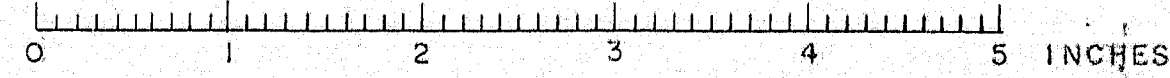
Dam Rights: Central Maine Power Co. owns 1/2 and Edwards and Thurston own 1/2. Perpetual rights to C.M.P. Co. rights to tunnel under abut. No. 1 owned by Mason Shaw Co.

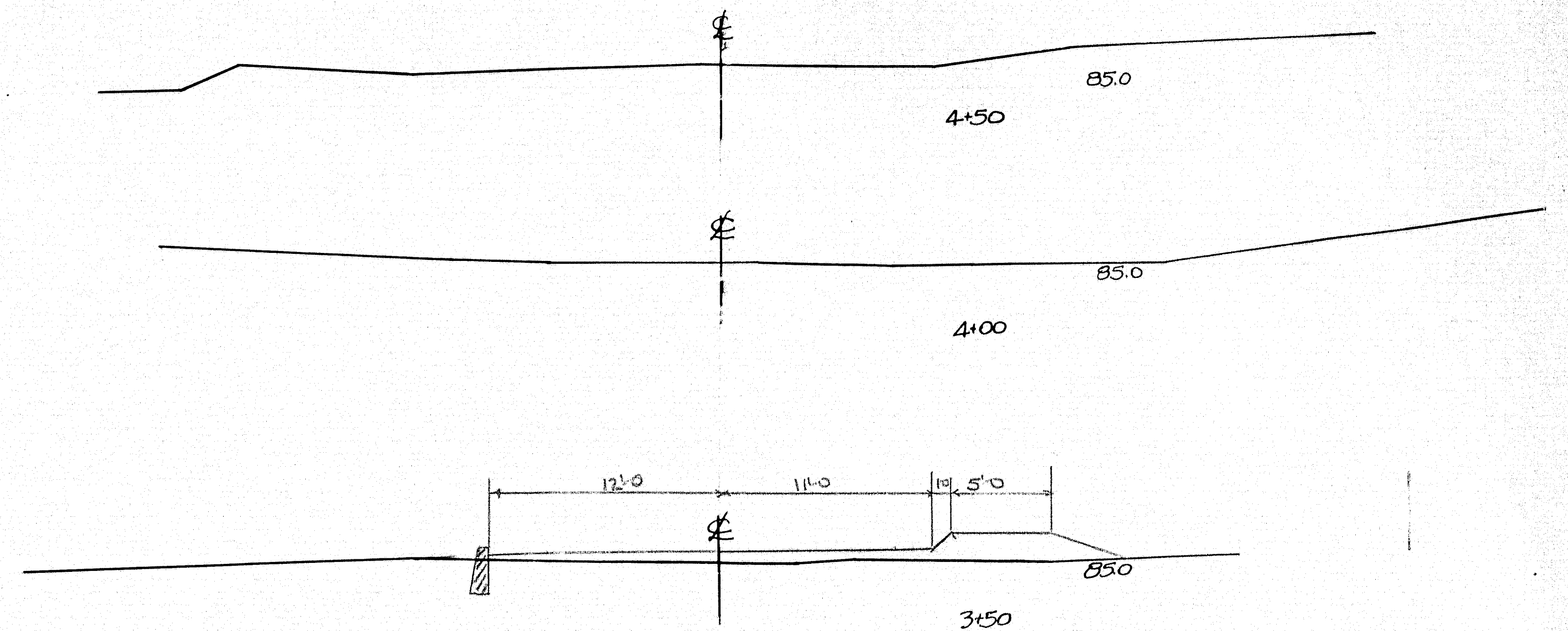
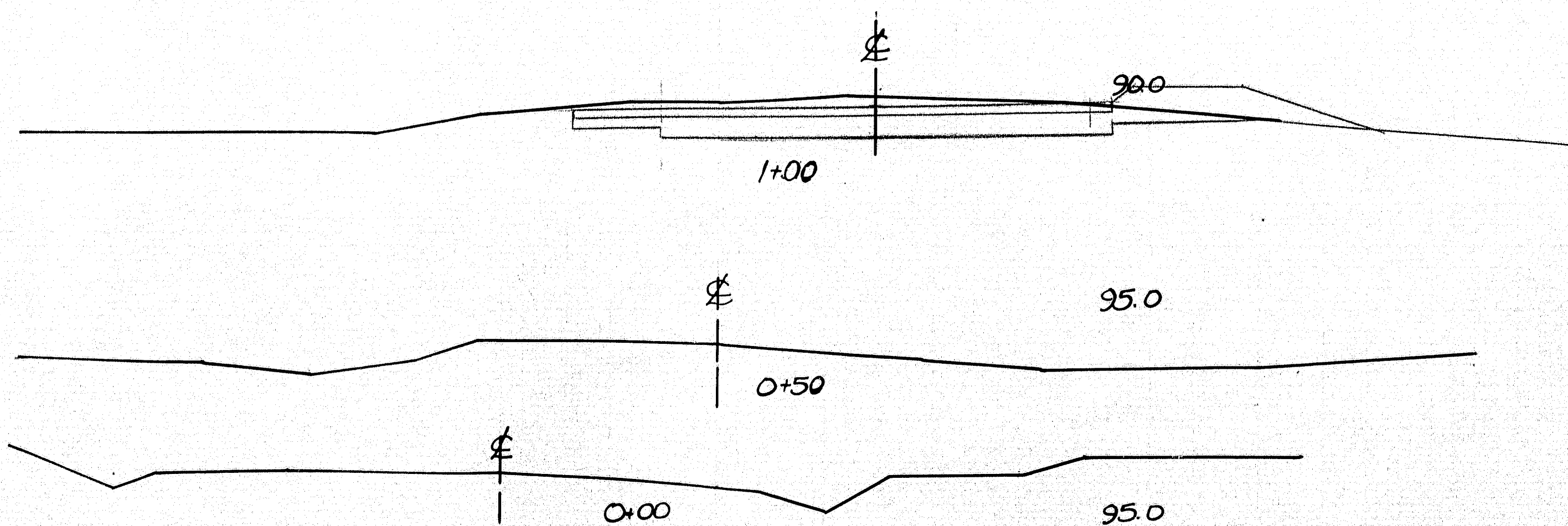
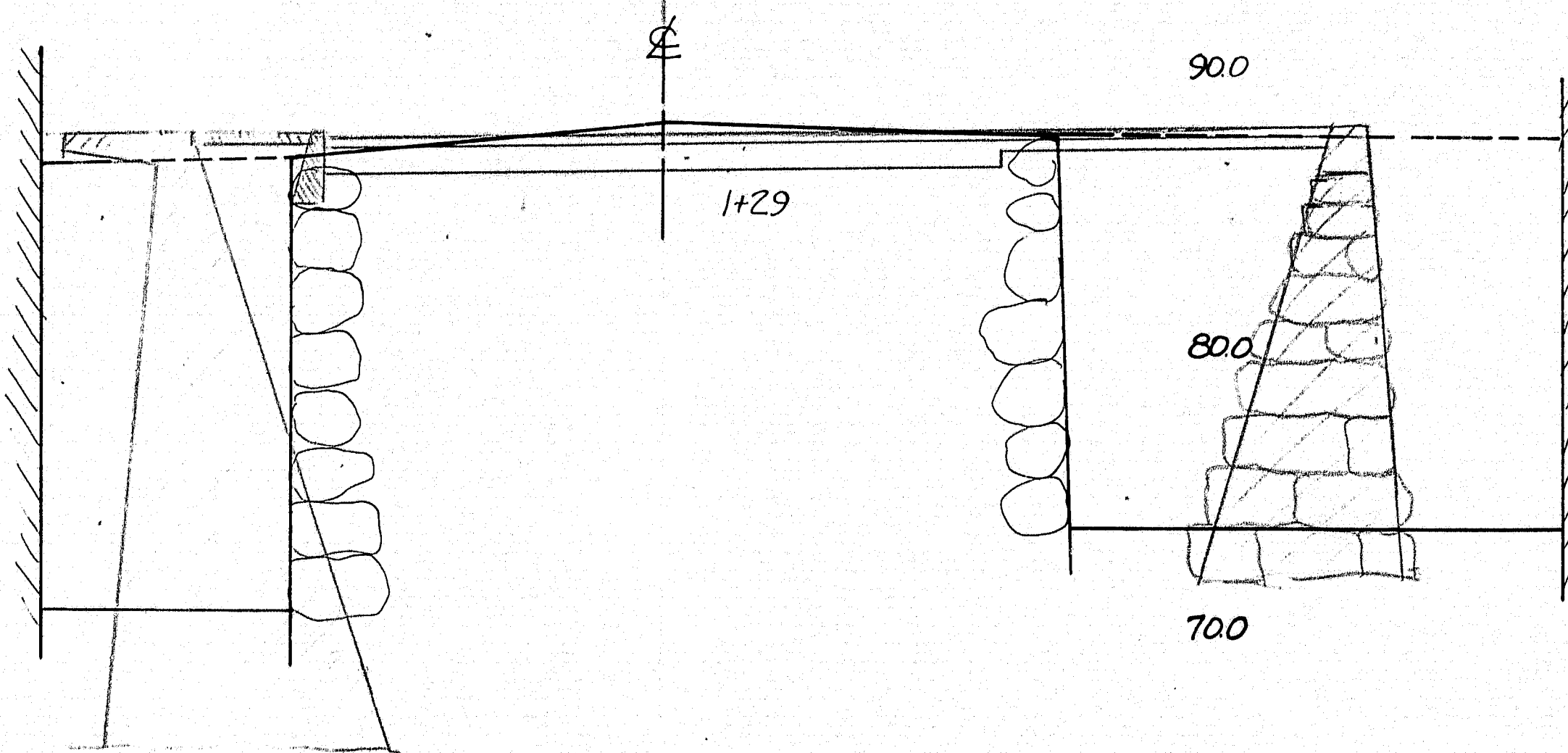
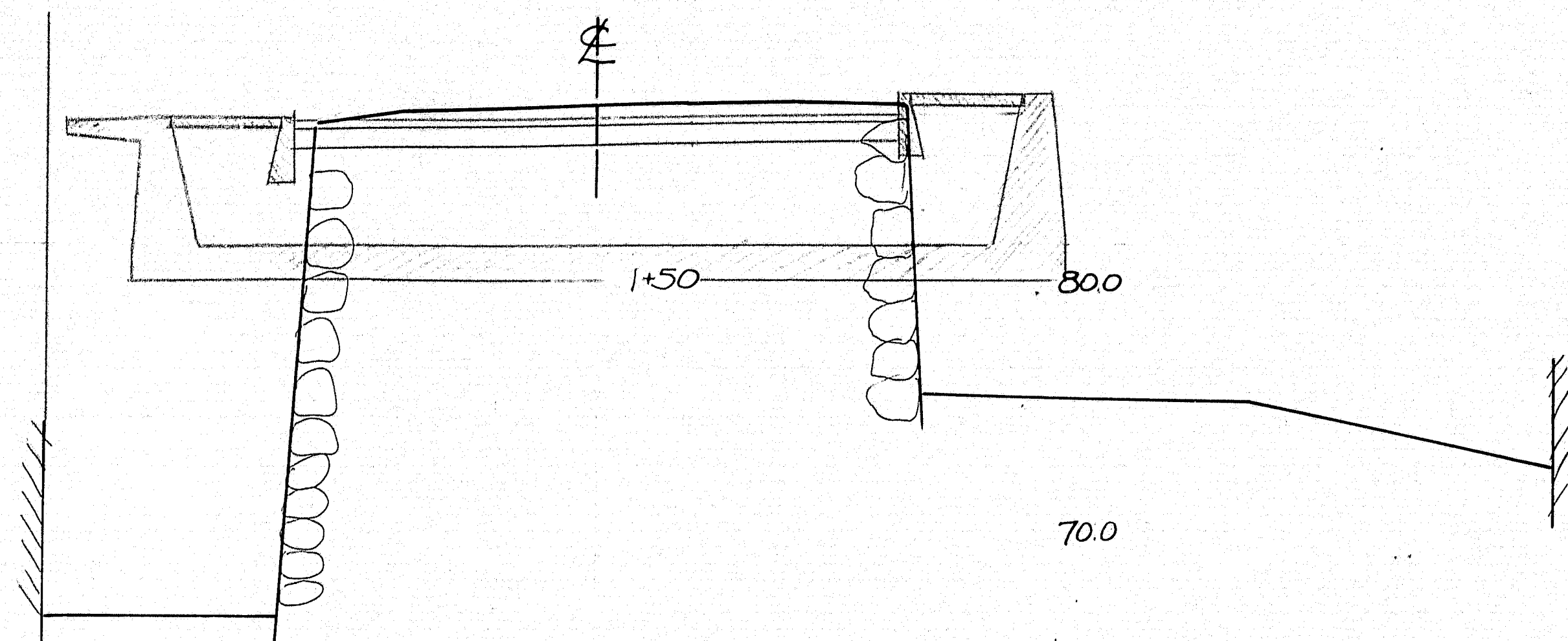
Maintenance of Traffic: Traffic may be detoured over Concrete Bridge reported about 1/4 mile up stream. Distance around detour reported as 1/2 mile. Detour road in rough condition. Bridge seat elevation per B.M. 81.51. Abut. built up to Ben 82.51 to new stringers.

F.V.A. PROJECT NO.
MAINE 109621F
TOWN 09-31
Bridge 2979

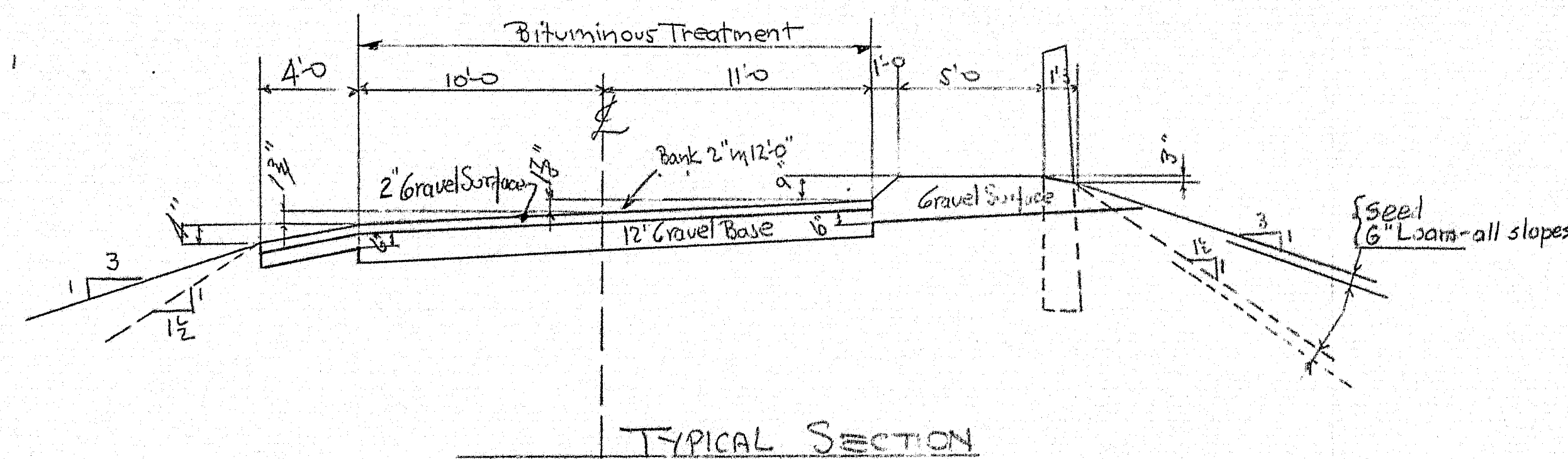
MAINE HIGHWAY COMMISSION
BRIDGE DIVISION
BILLINGS BRIDGE
OVER THE
LITTLE ANDROSCOGGIN RIVER
IN THE TOWN OF
PARIS, OXFORD CO.
SURVEY PLAN
SHEET 1 OF 3 AUGUSTA ME, DEC. 19, 1931
Revised as built - shown in green
Dec. 19, 1931 36-148 F.E.V.

Additional Survey - May 1930 - Brooks
Plotted ~ June 1930 - B.S.





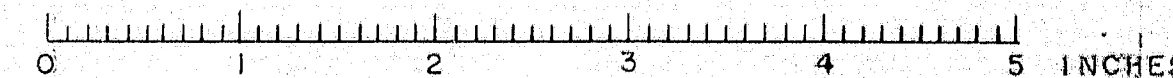
THERE SHALL BE NO CORNER ELEVATION
UNLESS PRESENT MATERIAL IS NOT
SUITABLE FOR ROLLING ROAD

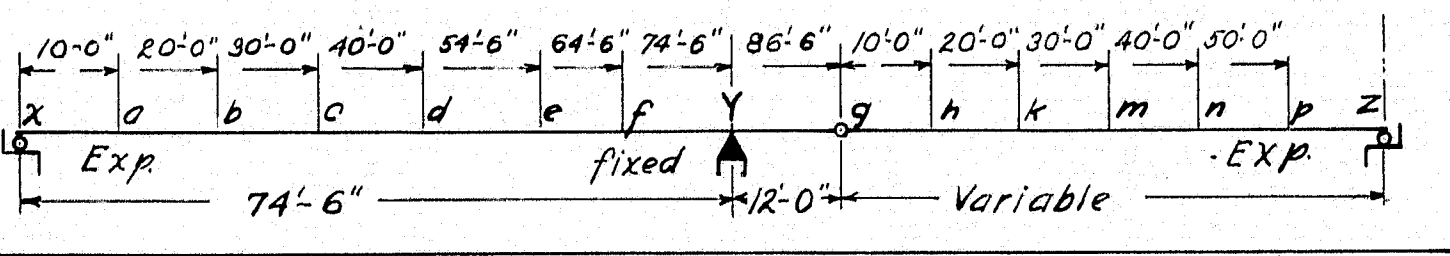
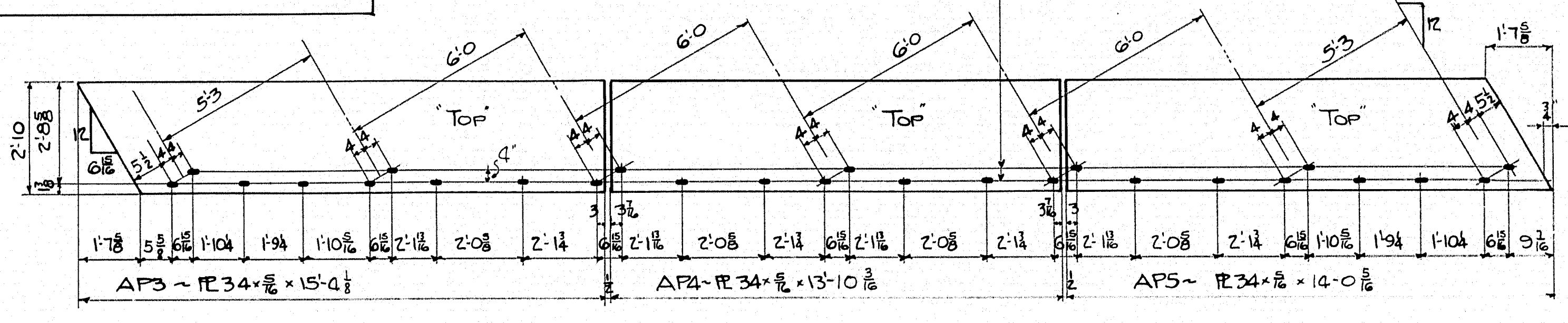
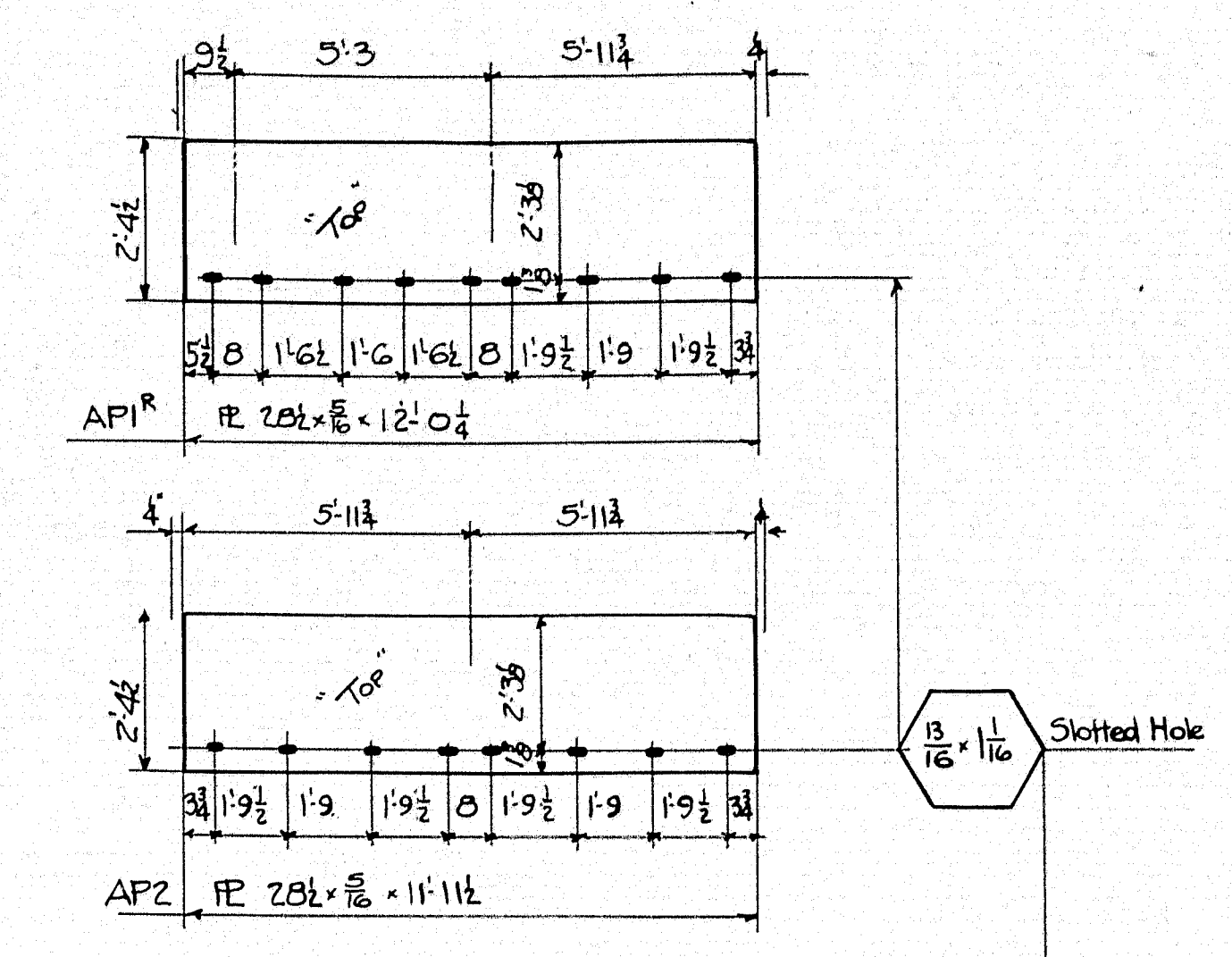
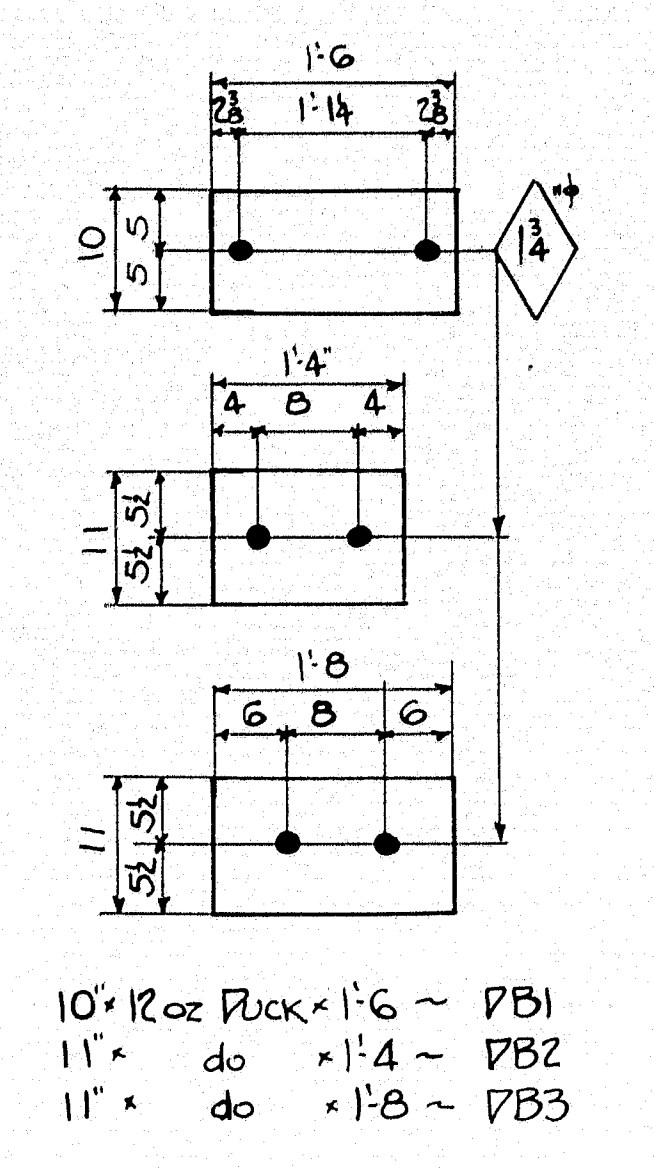
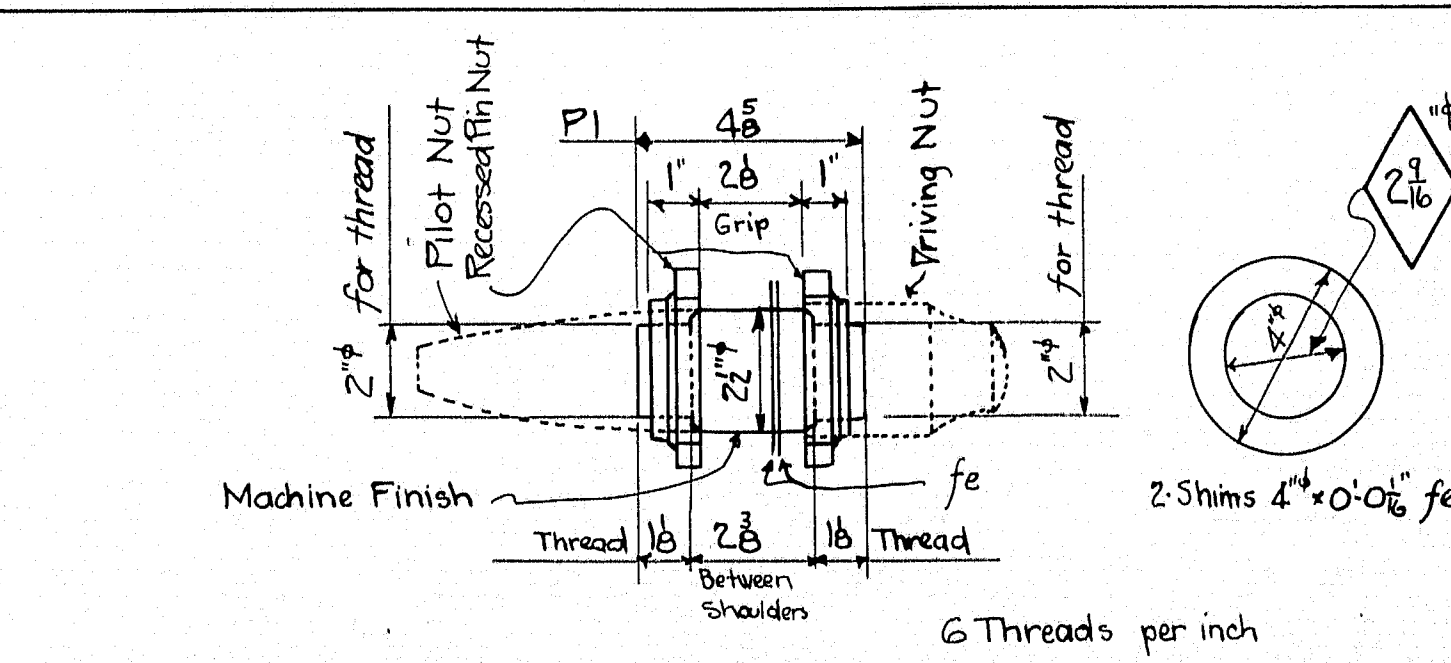
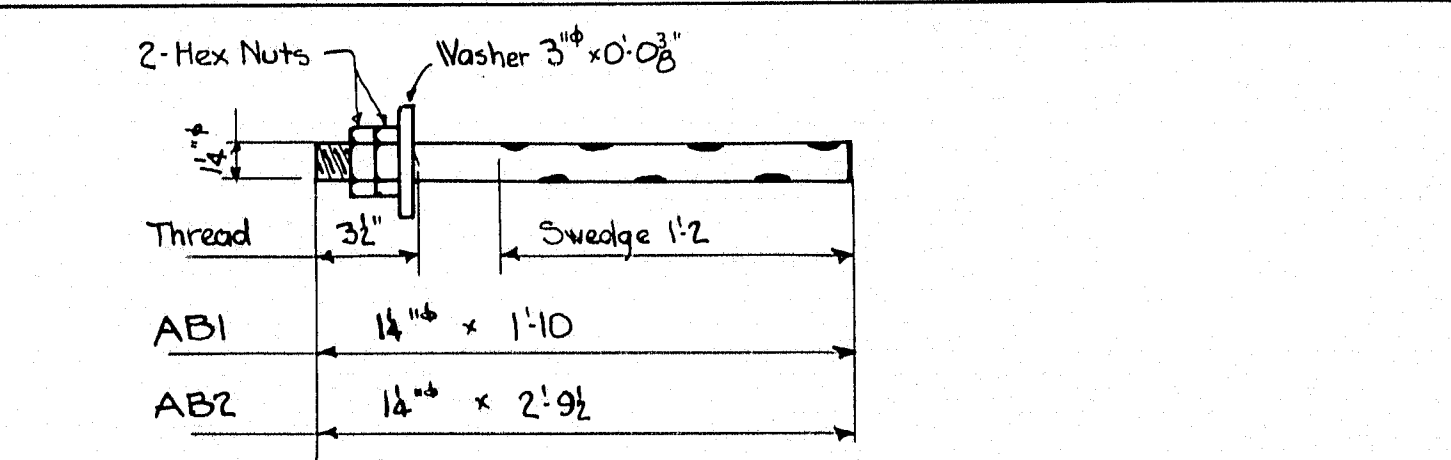
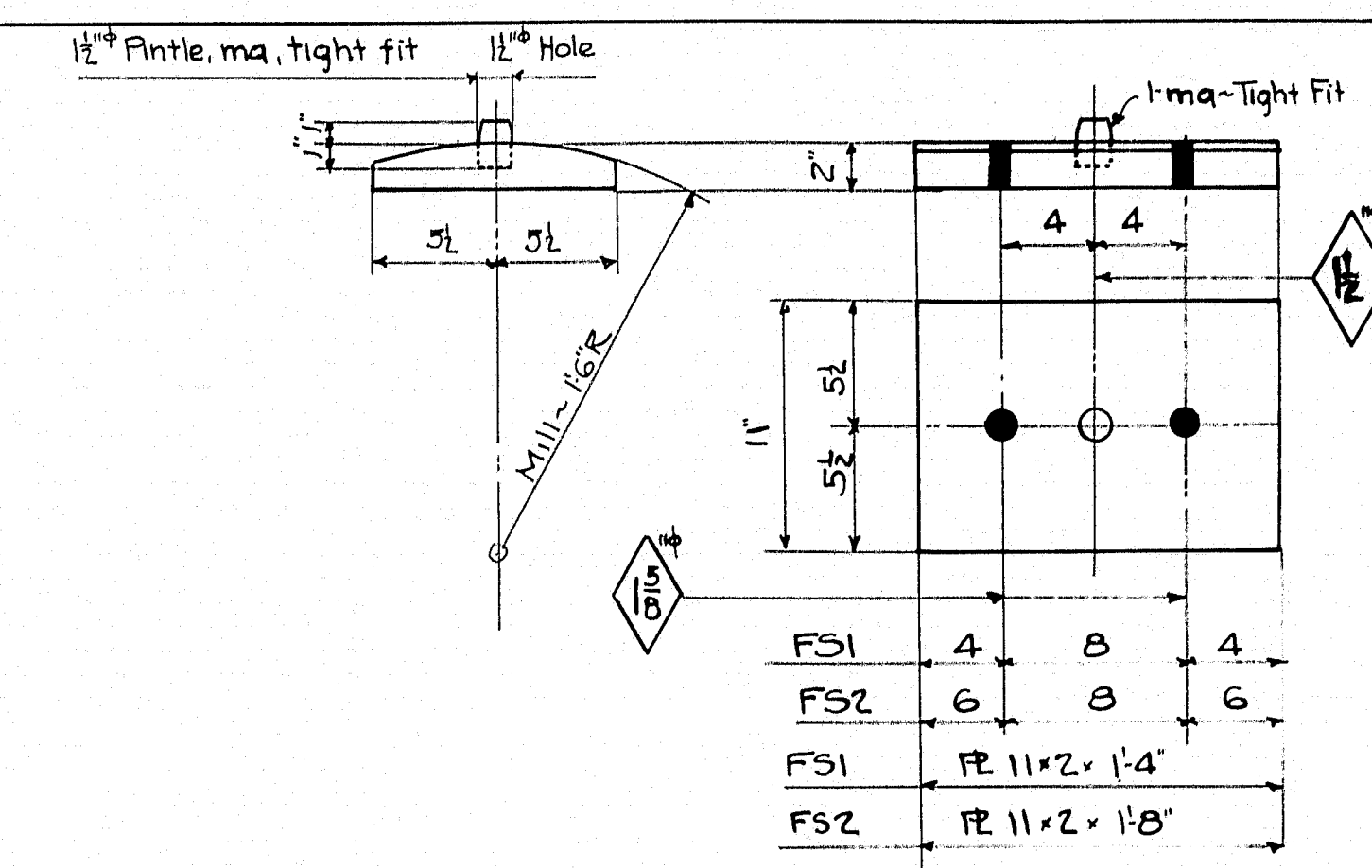
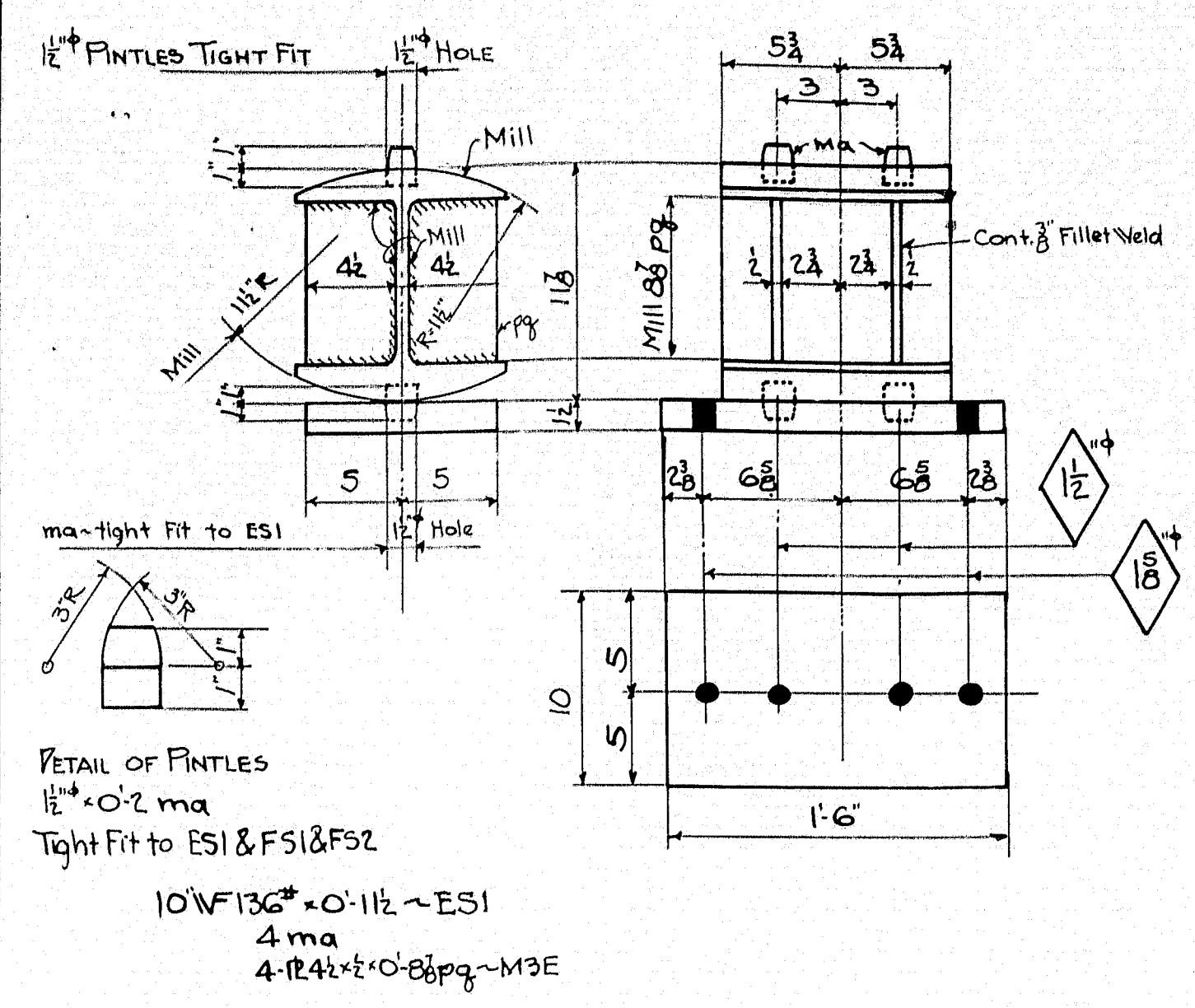


SCALE 1"=5'

PWA PROJECT NO.
MAINE 1096-21F
TOWN 08-31
BRIDGE 2979

STATE HIGHWAY COMMISSION
BRIDGE DIVISION
BILLINGS BRIDGE
OVER
LITTLE ANDROSCOGGIN RIVER
IN THE TOWN OF
PARIS
OXFORD COUNTY
APPROACH SECTIONS
SHEET 2 OF 9 AUGUSTA, MAINE JULY 1938
36-149





Dead load Deflections in inches												
Measured From line XYZ												
Point	X	a	b	c	d	e	f	Y	g	h	k	m
B8-B1		1/8	1/4	5/8	5/8	3/8	1/8		1/8	1/8	3/8	1/4
B9-B2		1/8	1/4	5/8	5/8	3/8	1/8		1/8	1/8	3/8	1/4
B10-B3		1/8	1/4	5/8	5/8	3/8	1/8		1/8	1/8	3/8	1/4
B10-B4		1/8	1/4	5/8	5/8	3/8	1/8		1/8	1/8	3/8	1/4
B10-B5		1/8	1/4	5/8	5/8	3/8	1/8		1/8	1/8	3/8	1/4
B9-B6		1/8	1/4	5/8	5/8	3/8	1/8		1/8	1/8	3/8	1/4
B8-B7		1/8	1/4	5/8	5/8	3/8	1/8		1/8	1/8	3/8	1/4

1. Expected Deflections from weight of Structural Steel
2. Expected Deflections from weight of Concrete Superstructure

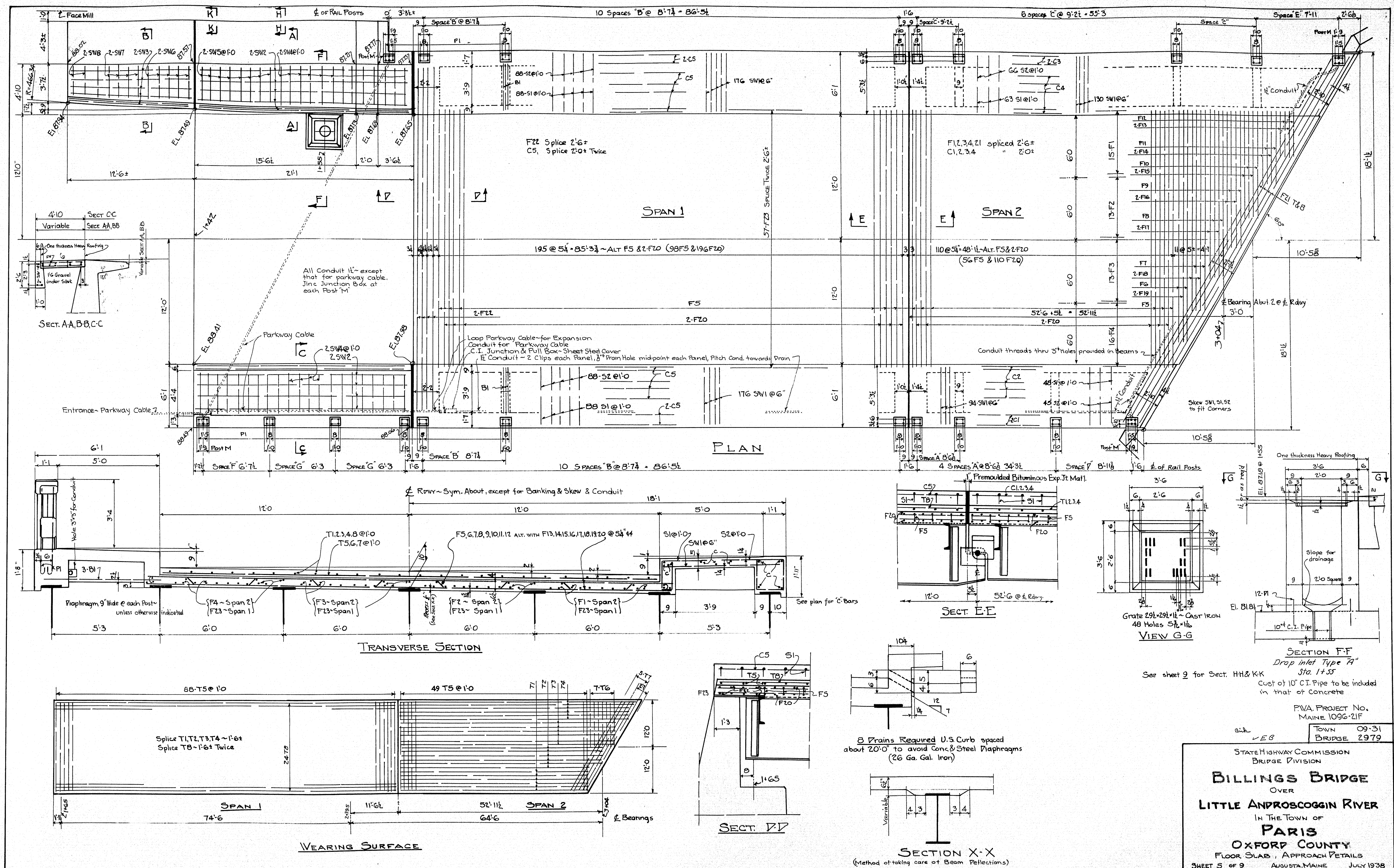
ORDER OF PLACING CONC. FLOOR
FIRST: X to e
SECOND: g to z
THIRD: e to g

F.W.A. PROJECT NO
MAINE 1096-21F

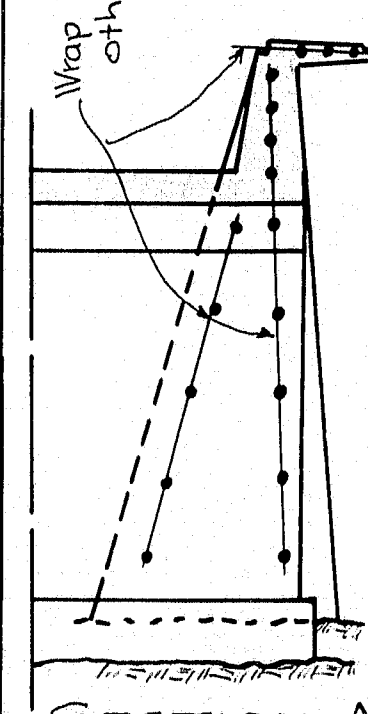
REQUIRED					
No	MAT'L	MK	No	MAT'L	MK
300	3/4" BOLTS x 0.2 1/2		14	ANCHOR BOLTS	AB1
300	do x 0.2 1/2		28	"	AB2
250	do x 0.2 1/2		7	PINS COMPLETE	PI
50	do x 0.3		2	PILOT NUTS	
			2	PRIVING NUTS	
900	LOCK WASHER 4 x 7/8		42	BUCK BEARINGS	VB1
850	HEX NUTS		6	"	VB2
			15	"	VB3
			14	EXP. PER.	ES1
			14	EXP. MAS. RE	ES2

STATE HIGHWAY COMMISSION
BRIDGE DIVISION
BILLINGS BRIDGE
OVER
LITTLE ANDROSCOGGIN RIVER
IN THE TOWN OF
PARIS
OXFORD COUNTY
STRUCTURAL STEEL
SHEET 4 OF 9 AUGUSTA, MAINE JULY, 1938

DO NOT PAINT TOP OF APRON PLATES
See sheet 3 for Specifications & detail notes.

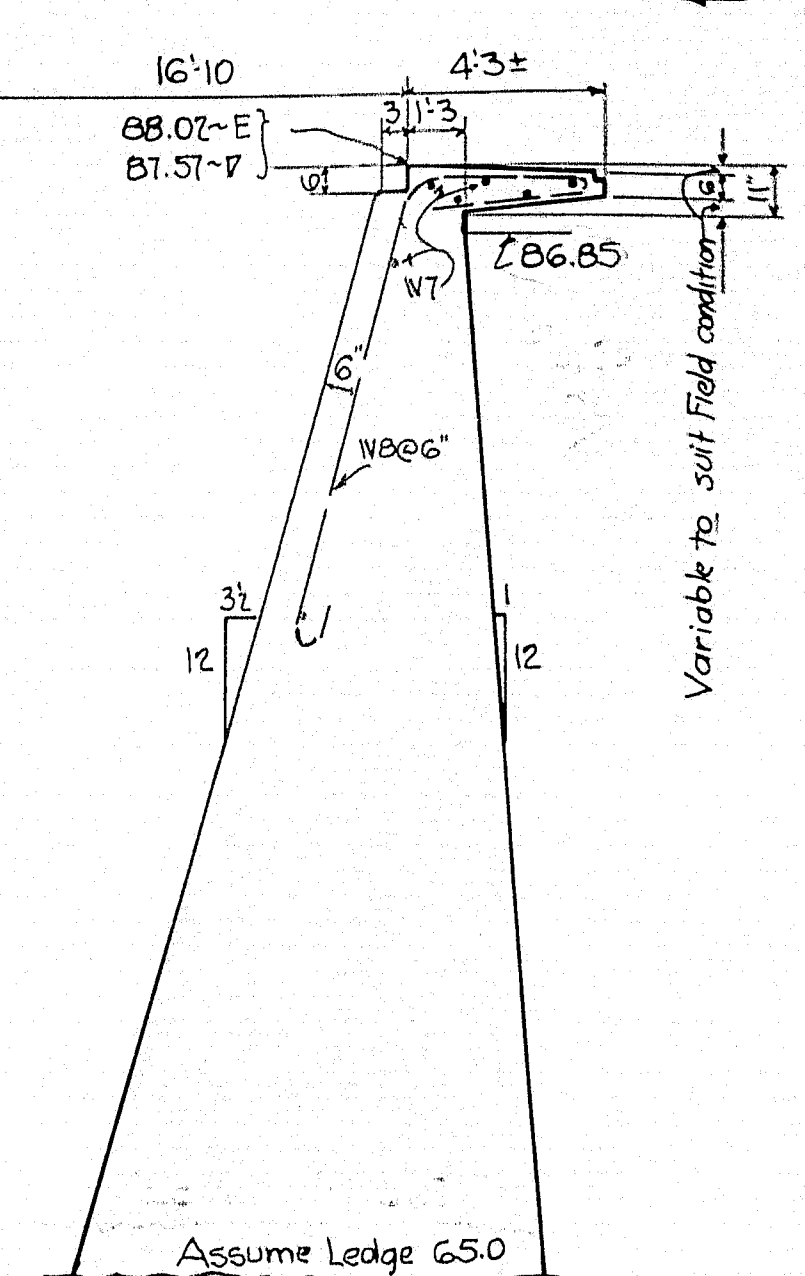


Wrap Rebars 11 one end with Heavy Roofing ~
other end to be 6" in Frame Concrete

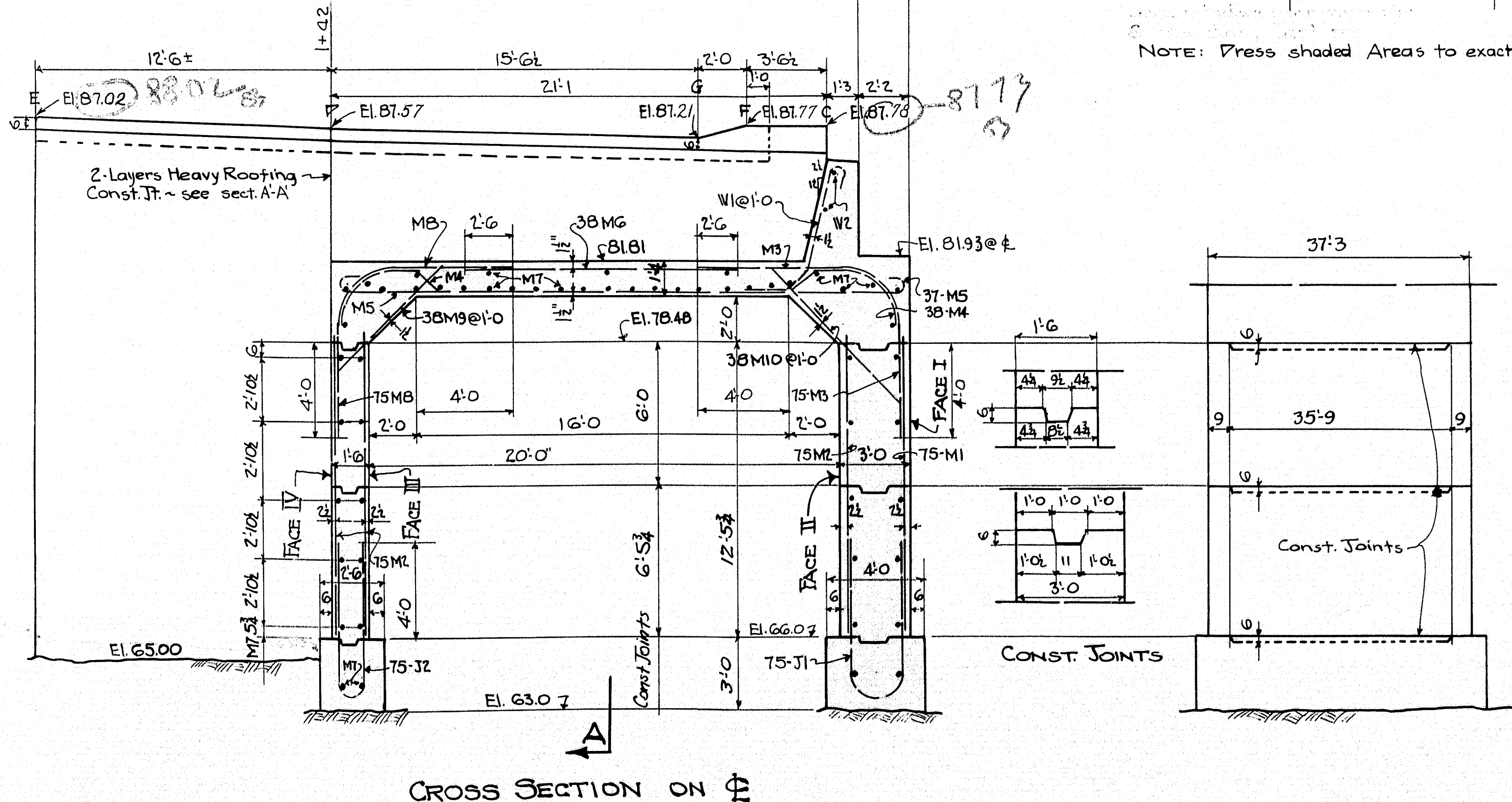


SECTION A-A

Tangent between F1's @ 1400 & 1400



SECTION B-B



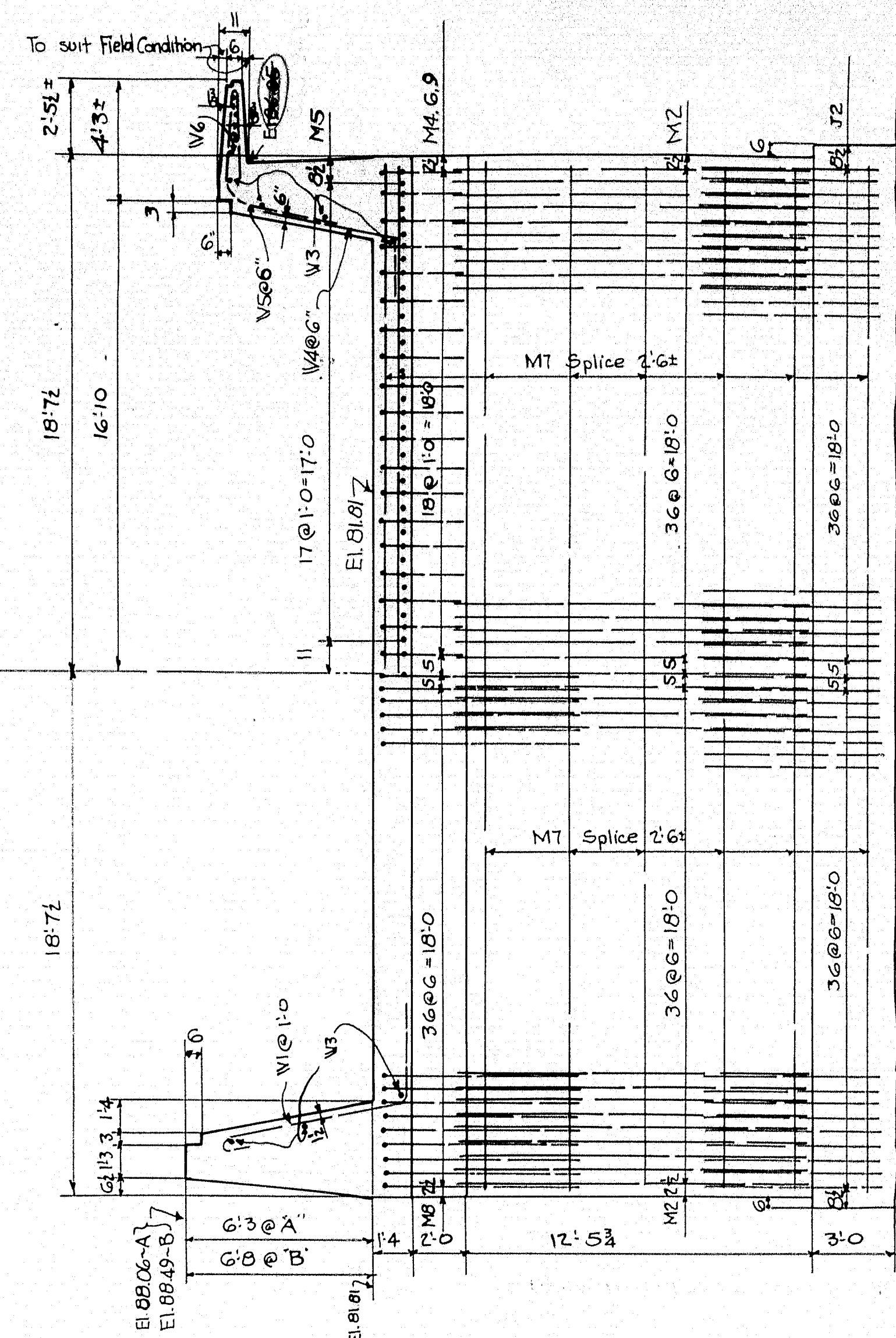
CROSS SECTION ON F

NOTE: Press shaded Areas to exact Elevation.

H 15
1/2" = 16000
1/4" = 900
3/8" = 10

FRONT ELEVATION
Steel Face I
Steel Face II

Tangent between F1's @ 1102 & 1400 ~
Frame Steel Sym. About



SECTION A-A
Steel Face IV
Steel Face III

Provide opening in Backwalls of Abuts. 182
for Water Pipe which will be under P.S. Sewer.

CONCRETE CLASSIFICATION
Superst. Abut. 1, Sdk, Cantilevers Class A
Ret. Wall Cap
Abut. 2, Pier, Mass Ret. Wall
Prop. Inlet, Catch Basin
Wearing Surface & Rail
Vibrate Abut No 1 Concrete

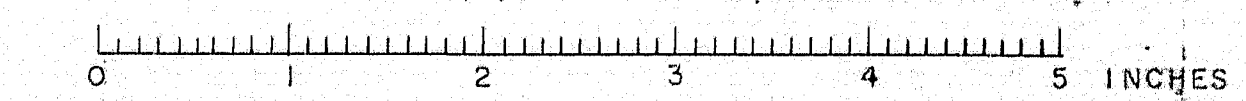
P.V.A. PROJECT NO.
MAINE 1096-21F

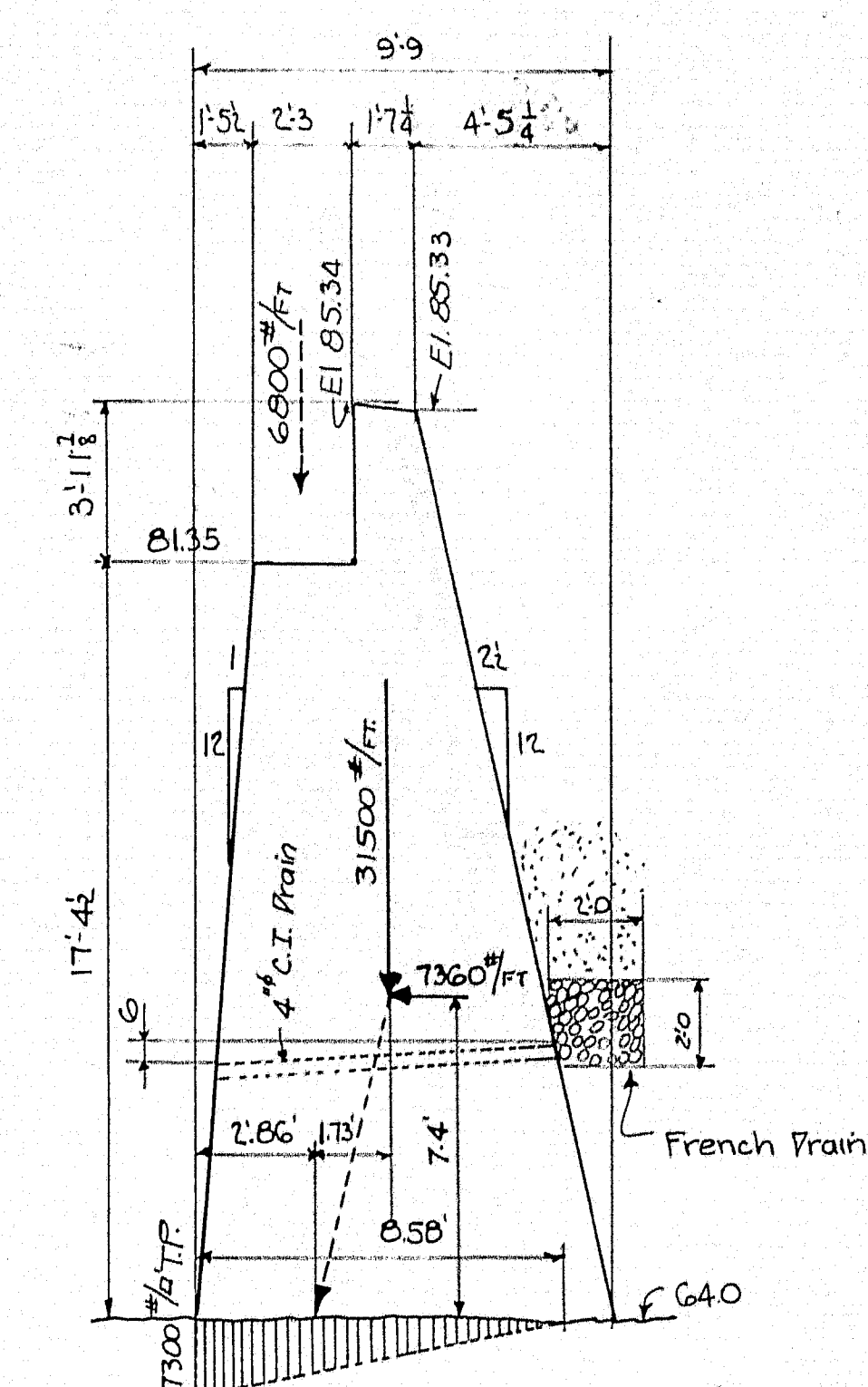
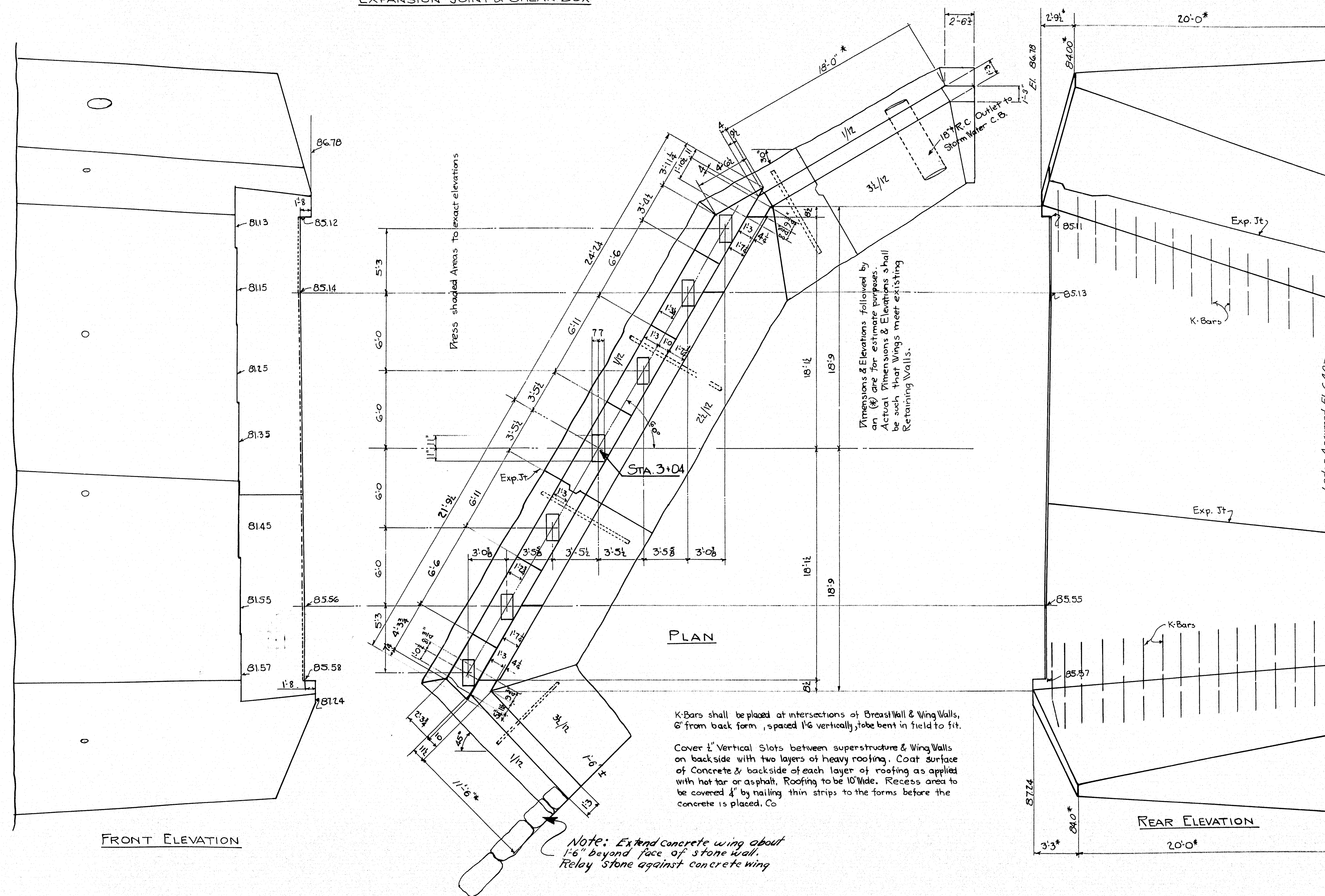
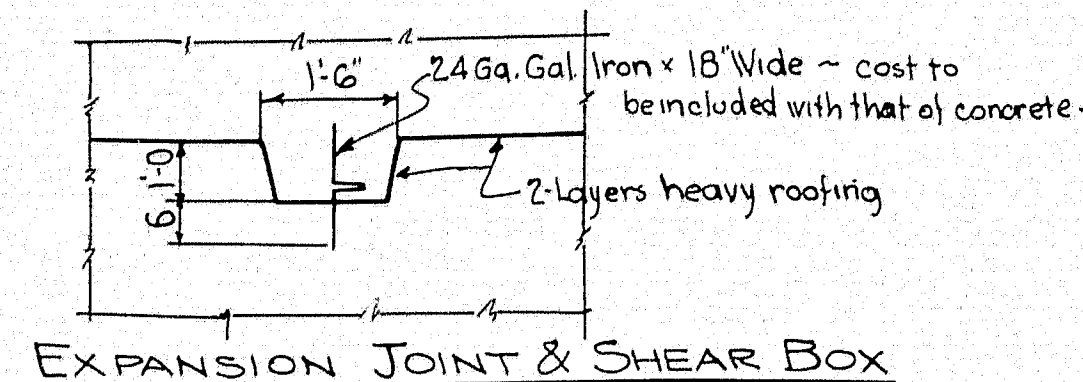
TOWN 09-31
BRIDGE 2979

STATE HIGHWAY COMMISSION
BRIDGE DIVISION

BILLINGS BRIDGE
OVER
LITTLE ANDROSCOGGIN RIVER
IN THE TOWN OF
PARIS
OXFORD COUNTY
ABUT. NO. 1, RET. WALL

SHEET 6 OF 9 AUGUSTA, MAINE JULY 1938





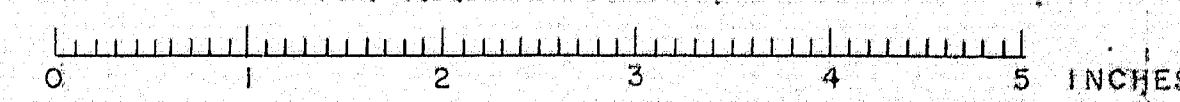
P.W.A. PROJECT NO.
MAINE 1096-21F

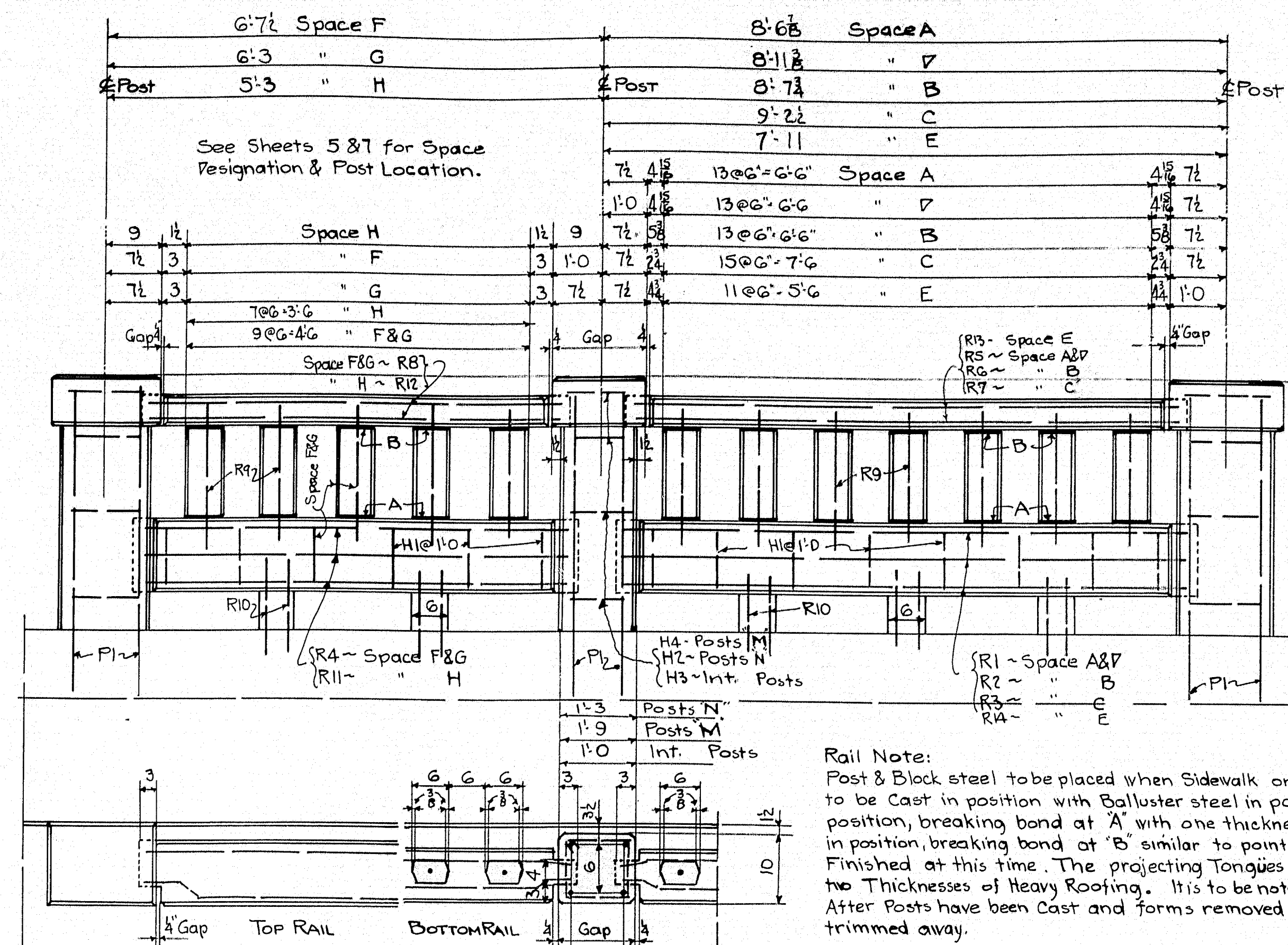
TOWN 09-31
BRIDGE 2979

STATE HIGHWAY COMMISSION
BRIDGE DIVISION

BILLINGS BRIDGE
OVER
LITTLE ANDROSCOGGIN RIVER
IN THE TOWN OF
PARIS
OXFORD COUNTY
ABUT. NO. 2

SHEET 3 OF 9 AUGUSTA, MAINE JULY 1938

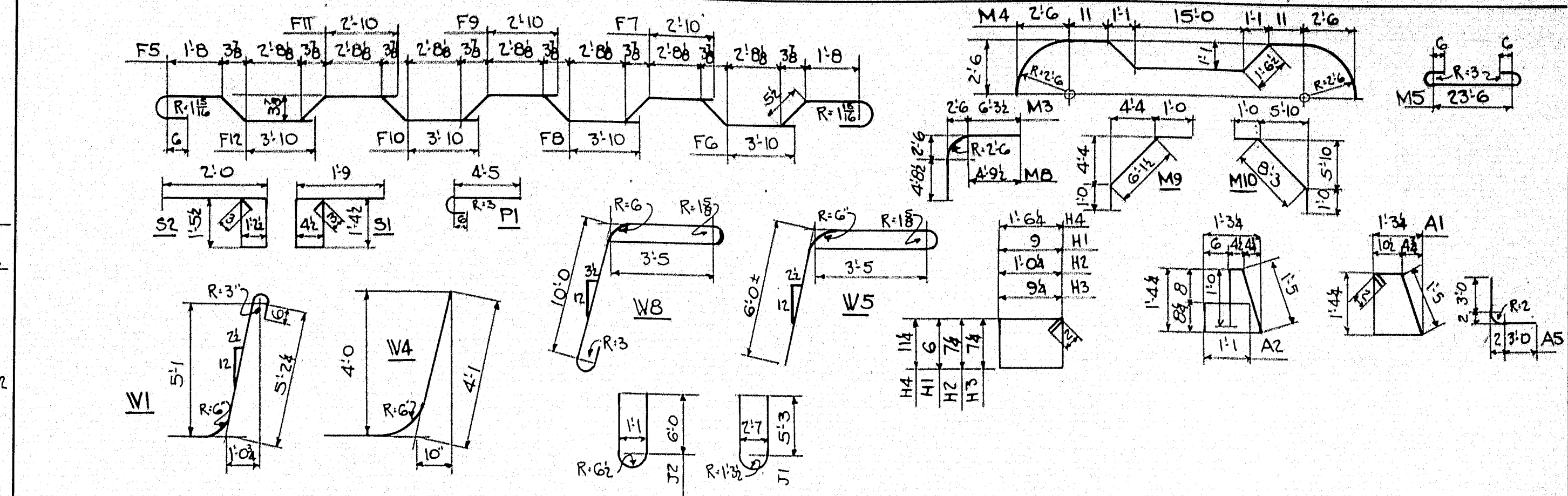




Wire stirrups to be constructed in Field - 12" from single strand #9 annealed wire. In forming stirrups, make a complete turn around each reinforcing bar.

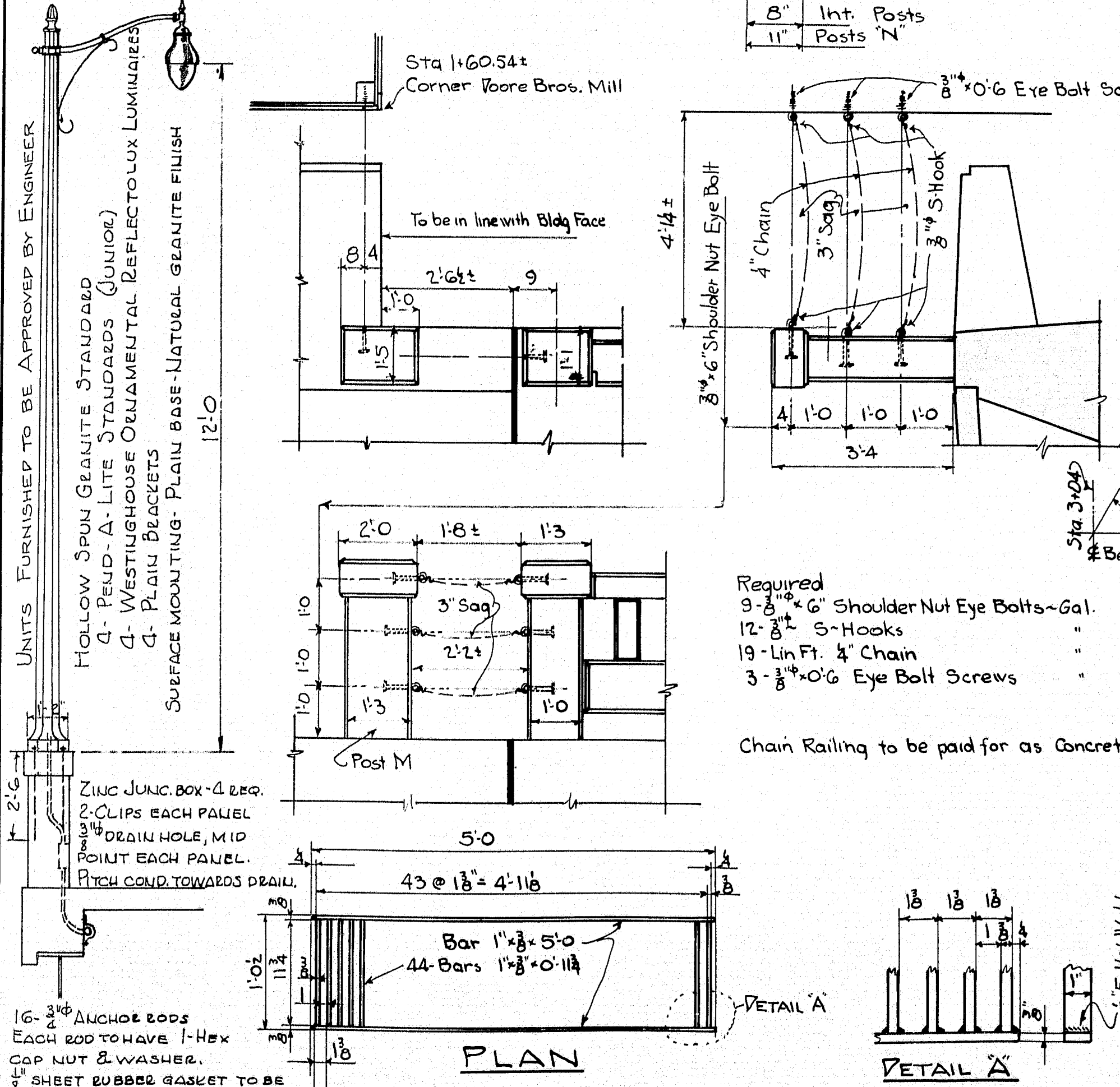
Rail Note:
Post & Block steel to be placed when Sidewalk or Ret. Wall Concrete is cast. Bottom Bar to be cast in position with Balluster steel in position. Ballusters are then cast in position, breaking bond at 'A' with one thickness of Heavy Roofing. Top Bar to be cast in position, breaking bond at 'B' similar to point 'A'. The ends of the Rails are to be finished at this time. The projecting Tongues of the Bars are neatly wrapped with two thicknesses of Heavy Roofing. It is to be noted that the Bars project into Posts 3'. After Posts have been cast and forms removed, all exposed Roofing shall be neatly trimmed away.

STEEL SCHEDULE

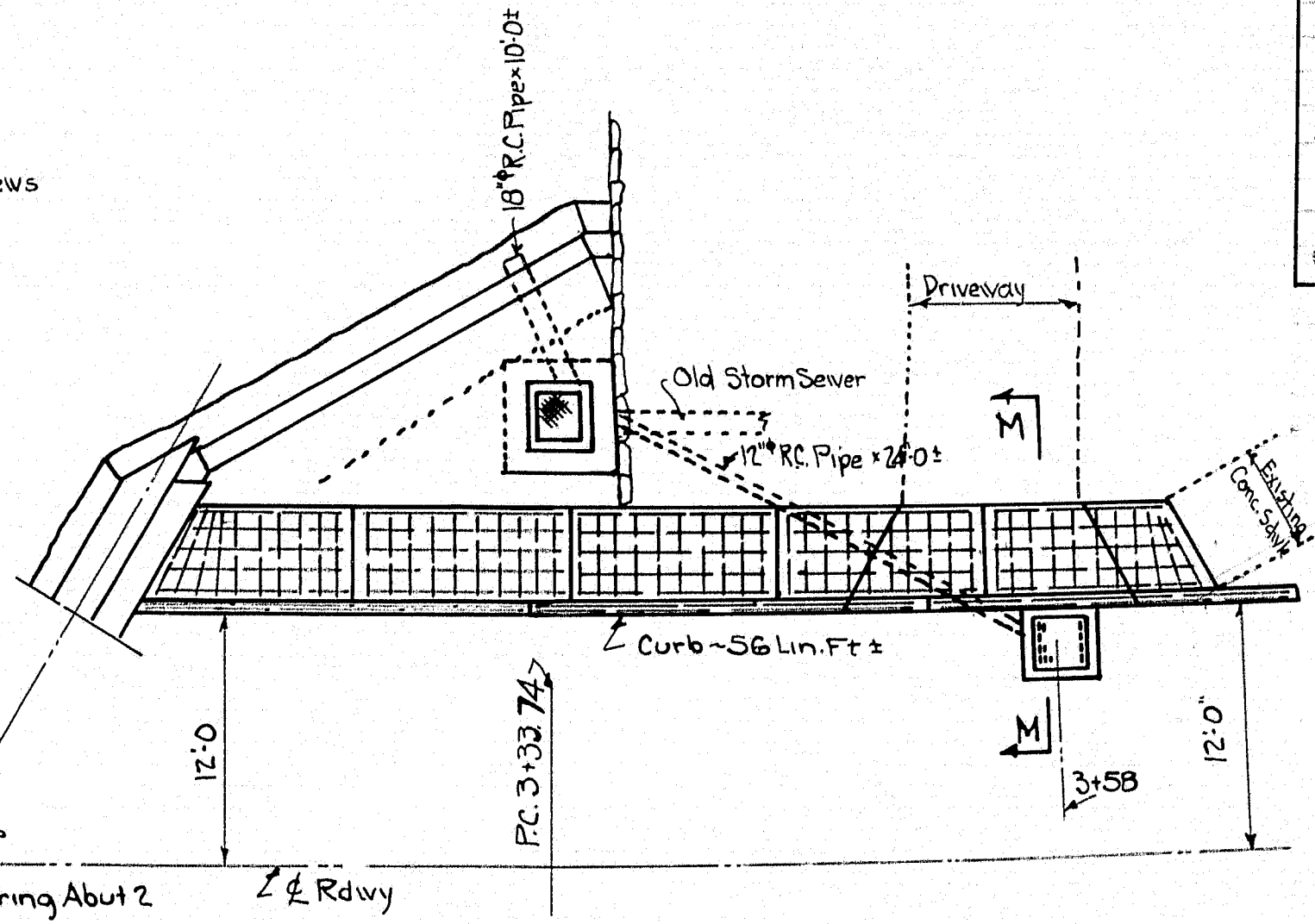


BENT BARS					STRAIGHT BARS				
Mk	Size	No	Length	Remarks	Mk	Size	No	Length	Remarks
F5	1/4"	154	27'-08"	Slab Trans-span 1st	C1	1/4"	8	23'-08"	Curb - Span 2
F6	1/4"	2	24'-94"	Span 2	C2	1/4"	10	23'-08"	"
F7	1/4"	2	21'-78"	"	C3	1/4"	8	34'-24"	"
F8	1/4"	2	18'-6"	"	C4	1/4"	10	32'-24"	"
F9	1/4"	2	15'-48"	"	C5	1/4"	34	30'-64"	"
F10	1/4"	2	12'-24"	"	C6	1/4"	12	18'-6"	"
F11	1/4"	2	9'-18"	"	SW1	5/16"	576	5'-7"	Sdwk.
F12	1/4"	2	5'-11"	"	SW2	1/4"	24	20'-9"	"
S1	1/4"	287	5'-11"	Curb Sdwk. Beam	SW3	1/4"	12	12'-2"	"
S2	1/4"	287	6'-41"	"	SW4	1/4"	68	4'-0"	"
V1	1/4"	55	8'-0"	Ret. Wall - Frame	SW5	1/4"	16	3'-8"	"
V2	1/4"	42	6'-6"	"	SW6	1/4"	10	3'-4"	"
V3	1/4"	37	13'-3"	"	SW7	1/4"	8	3'-1"	"
V4	1/4"	25	18'-6"	"	SW8	1/4"	6	2'-10"	"
V5	1/4"	37	13'-3"	"	SW9	1/4"	50	4'-3"	"
V6	1/4"	25	18'-6"	"	SW10	1/4"	25	9'-6"	"
A1	1/4"	10	5'-3"	Ret. Wall Cap	W2	1/4"	4	19'-0"	Back Wall - Frame
A2	1/4"	24	5'-10"	"	W3	1/4"	7	22'-0"	Sdwk.
A3	1/4"	6	6'-3"	"	W4	1/4"	4	18'-0"	"
A4	1/4"	6	6'-3"	"	W5	1/4"	7	12'-0"	Ret. Wall
A5	1/4"	6	6'-3"	"	W6	1/4"	4	18'-0"	"
A6	1/4"	6	6'-3"	"	W7	1/4"	7	12'-0"	"
A7	1/4"	6	6'-3"	"	V1	1/4"	29	1'-0"	Wings
A8	1/4"	6	6'-3"	"					
A9	1/4"	6	6'-3"	"					
A10	1/4"	6	6'-3"	"					
A11	1/4"	6	6'-3"	"					
A12	1/4"	6	6'-3"	"					
A13	1/4"	6	6'-3"	"					
A14	1/4"	6	6'-3"	"					
A15	1/4"	6	6'-3"	"					
A16	1/4"	6	6'-3"	"					
A17	1/4"	6	6'-3"	"					
A18	1/4"	6	6'-3"	"					
A19	1/4"	6	6'-3"	"					
A20	1/4"	6	6'-3"	"					
A21	1/4"	6	6'-3"	"					
A22	1/4"	6	6'-3"	"					
A23	1/4"	6	6'-3"	"					
A24	1/4"	6	6'-3"	"					
A25	1/4"	6	6'-3"	"					
A26	1/4"	6	6'-3"	"					
A27	1/4"	6	6'-3"	"					
A28	1/4"	6	6'-3"	"					
A29	1/4"	6	6'-3"	"					
A30	1/4"	6	6'-3"	"					
A31	1/4"	6	6'-3"	"					
A32	1/4"	6	6'-3"	"					
A33	1/4"	6	6'-3"	"					
A34	1/4"	6	6'-3"	"					
A35	1/4"	6	6'-3"	"					
A36	1/4"	6	6'-3"	"					
A37	1/4"	6	6'-3"	"					
A38	1/4"	6	6'-3"	"					
A39	1/4"	6	6'-3"	"					
A40	1/4"	6	6'-3"	"					
A41	1/4"	6	6'-3"	"					
A42	1/4"	6	6'-3"	"					
A43	1/4"	6	6'-3"	"					
A44	1/4"	6	6'-3"	"					
A45	1/4"	6	6'-3"	"					
A46	1/4"	6	6'-3"	"					
A47	1/4"	6	6'-3"	"					
A48	1/4"	6	6'-3"	"					
A49	1/4"	6	6'-3"	"					
A50	1/4"	6	6'-3"	"					
A51	1/4"	6	6'-3"	"					
A52	1/4"	6	6'-3"	"					
A53	1/4"	6	6'-3"	"					
A54	1/4"	6	6'-3"	"					
A55	1/4"	6	6'-3"	"					
A56	1/4"	6	6'-3"	"					
A57	1/4"	6	6'-3"	"					
A58	1/4"	6	6'-3"	"					
A59	1/4"	6	6'-3"	"					
A60	1/4"	6	6'-3"	"					
A61	1/4"	6	6'-3"	"					
A62	1/4"	6	6'-3"	"					
A63	1/4"	6	6'-3"	"					
A64	1/4"	6	6'-3"	"					
A65	1/4"	6	6'-3"	"					
A66	1/4"	6	6'-3"	"					
A67	1/4"	6	6'-3"	"					
A68	1/4"	6	6'-3"	"					
A69	1/4"	6	6'-3"	"					
A70	1/4"	6	6'-3"	"					
A71	1/4"	6	6'-3"	"					
A72	1/4"	6	6'-3"	"					
A73	1/4"	6	6'-3"	"					
A74	1/4"	6	6'-3"	"					
A75	1/4"	6	6'-3"	"					
A76	1/4"	6	6'-3"	"					
A77	1/4"	6	6'-3"	"					
A78	1/4"	6	6'-3"	"					
A79	1/4"	6	6'-3"	"					
A80	1/4"	6	6'-3"	"					
A81	1/4"	6	6'-3"	"					
A82	1/4"	6	6'-3"	"					
A83	1/4"	6	6'-3"	"					
A84	1/4"	6	6'-3"	"					
A85	1/4"	6	6'-3"	"					
A86	1/4"	6	6'-3"	"					
A87	1/4"	6	6'-3"	"					
A88	1/4"	6	6'-3"	"					
A89	1/4"	6	6'-3"	"					
A90	1/4"	6	6'-3"	"					
A91	1/4"	6	6'-3"	"					
A92	1/4"	6	6'-3"	"					
A93	1/4"	6	6'-3"	"					
A94	1/4"	6	6'-3"	"					
A95	1/4"	6	6'-3"	"					
A96	1/4"	6	6'-3"	"					
A97	1/4"	6	6'-3"	"					
A98	1/4"	6	6'-3"	"					
A99	1/4"	6	6'-3"	"					
A100	1/4"	6	6'-3"	"					

Reinforcing Steel, plain bars, structural grade. Dimensions to center of bars.

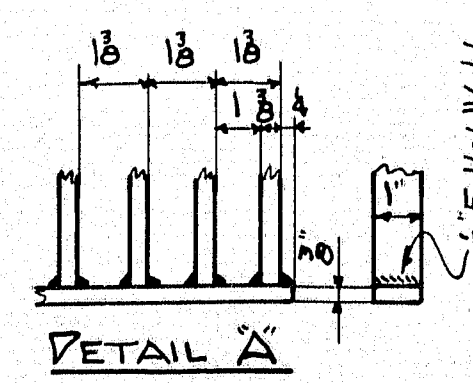


GRATE IN FRONT OF POORE BROS MILL - one reqd (between Sdwk & Mill)

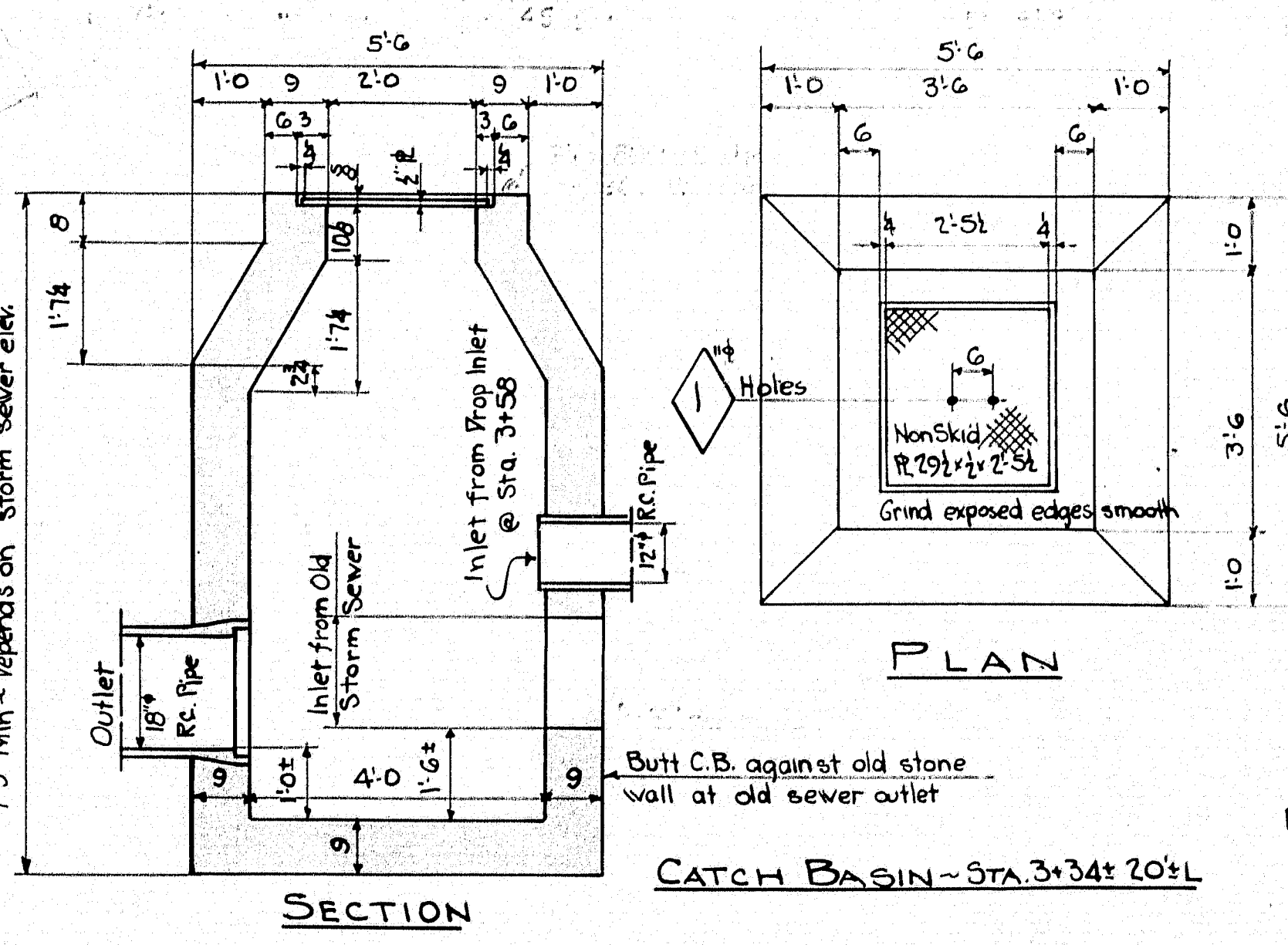


Required:
9'-0" 6" Shoulder Nut Eye Bolts - Gal.
12'-0" 5" Hooks
19'-0" Lin. Ft. 4" Chain
3'-0" 6" Eye Bolt Screws

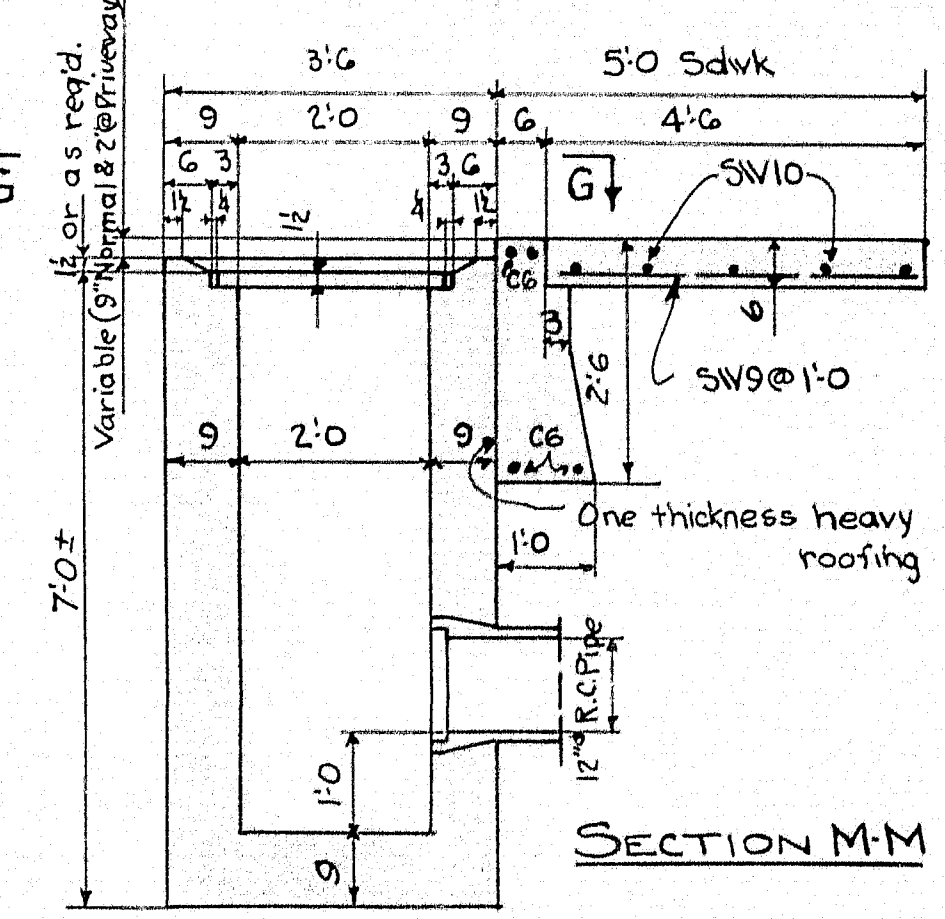
Chain Railing to be paid for as Concrete Railing



SECTION H-H of Sh. 5 (Between Sdwk & Poore Bros Mill Sect. K-K prevails except for Grate Section)



CATCH BASIN - STA. 3+34.20±



PROP INLET - STA. 3+58 U.S. CURB View GG on sheet 5

PIVA PROJECT NO. MAINE 1096-21F
STATE HIGHWAY COMMISSION
BRIDGE DIVISION
BILLINGS BRIDGE
OVER
LITTLE ANDROSCOGGIN RIVER
IN THE TOWN OF
PARIS
OXFORD COUNTY
RAILING, REINFORCING STEEL, ETC.
SHEET 9 OF 9
AUGUSTA, MAINE
JULY 1938